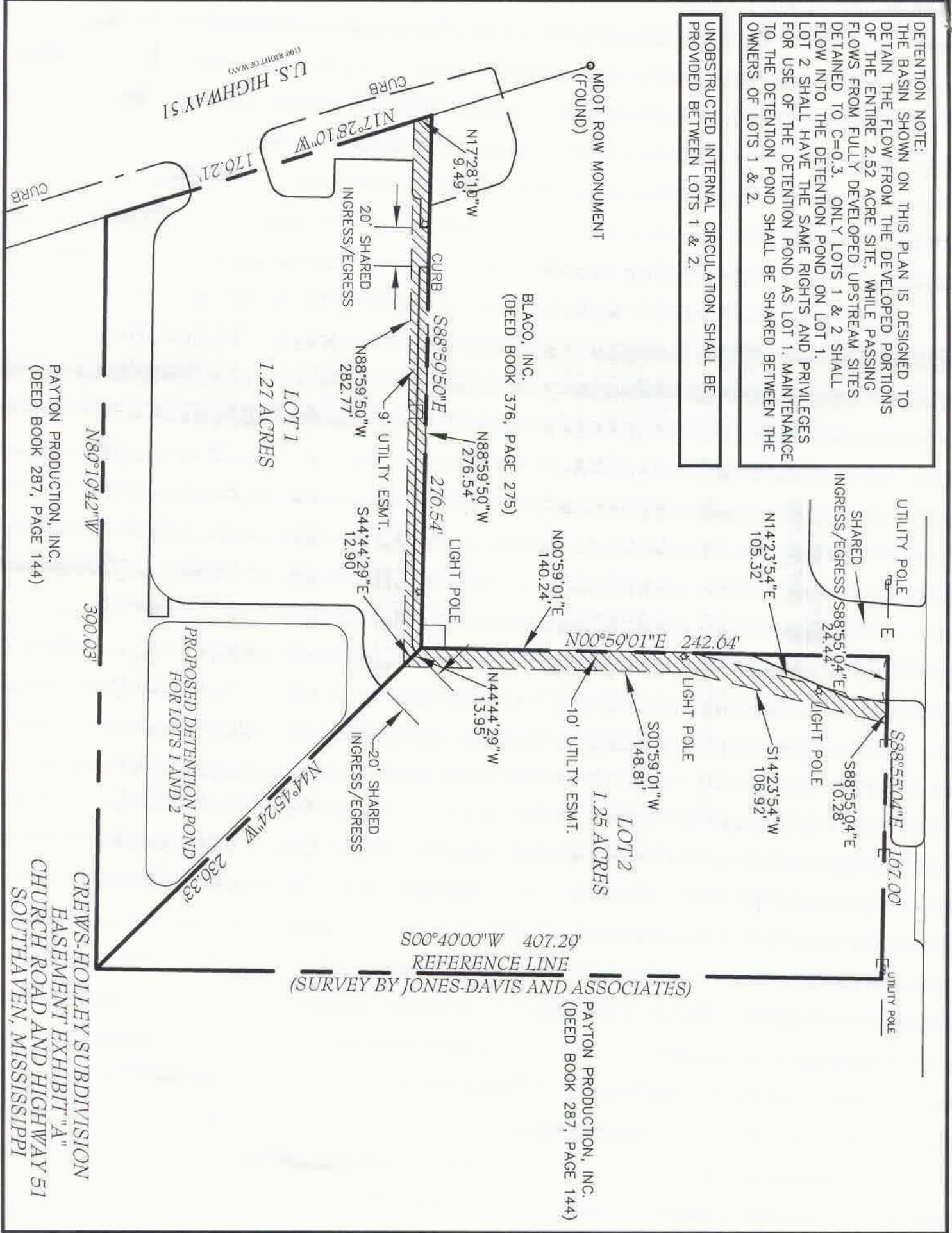


**DETENTION NOTE:**  
 THE BASIN SHOWN ON THIS PLAN IS DESIGNED TO DETAIN THE FLOW FROM THE DEVELOPED PORTIONS OF THE ENTIRE 2.52 ACRE SITE, WHILE PASSING FLOWS FROM FULLY DEVELOPED UPSTREAM SITES DETAINED TO C=0.3. ONLY LOTS 1 & 2 SHALL FLOW INTO THE DETENTION POND ON LOT 1. LOT 2 SHALL HAVE THE SAME RIGHTS AND PRIVILEGES FOR USE OF THE DETENTION POND AS LOT 1. MAINTENANCE TO THE DETENTION POND SHALL BE SHARED BETWEEN THE OWNERS OF LOTS 1 & 2.

UNOBSTRUCTED INTERNAL CIRCULATION SHALL BE PROVIDED BETWEEN LOTS 1 & 2.



PAYTON PRODUCTION, INC.  
 (DEED BOOK 287, PAGE 144)

PAYTON PRODUCTION, INC.  
 (DEED BOOK 287, PAGE 144)

REFERENCE LINE  
 (SURVEY BY JONES-DAVIS AND ASSOCIATES)